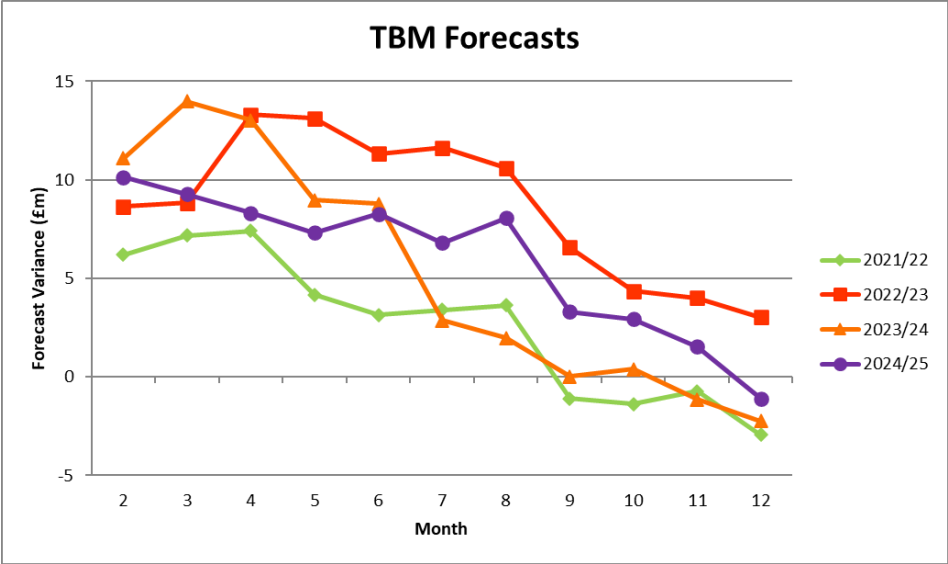


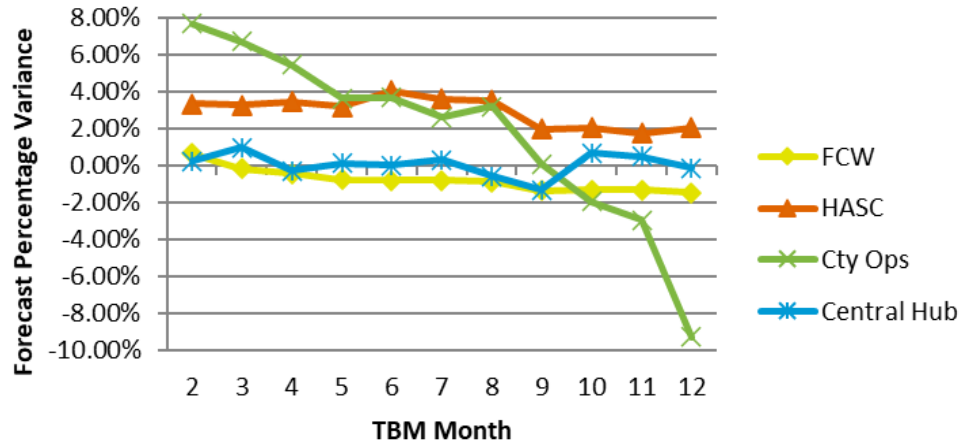
Direction of Travel

Directorate/Fund	Provisional Variance Month 12	Provisional Variance Month 12	Change From Month 9	RAG Rating Month 12
	£'000	%		
General Fund Services:				
Families, Children & Wellbeing	(1,062)	-1.5%	↑	Green
Homes & Adult Social Care	2,431	2.1%	↓	Red
City Operations	(3,797)	-9.3%	↑	Green
Central Hub	(43)	-0.1%	↑	Green
Centrally-held Budgets	1,380	2.7%	↑	Red
Total General Fund	(1,091)	-0.5%	↑	Green
Dedicated Schools Grant (DSG)	680	53.4%	↑	Red
Housing Revenue Account	0	0.0%	=	Green

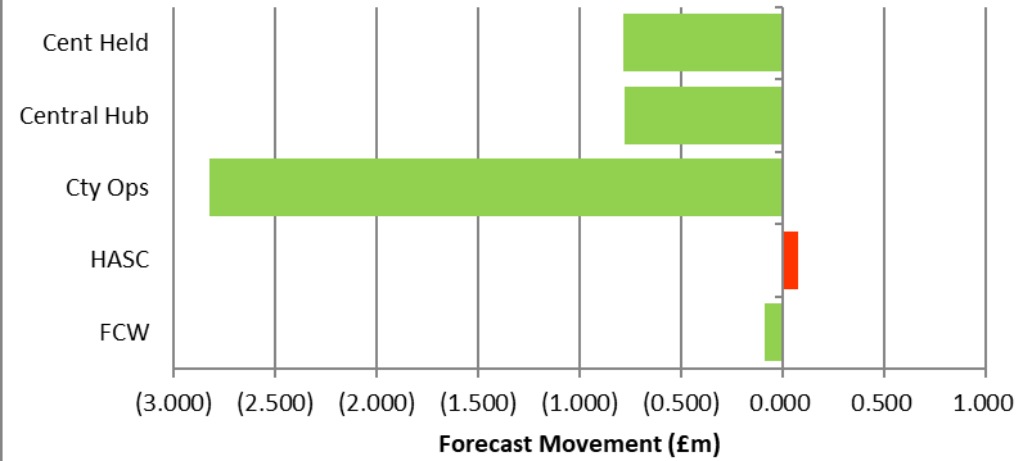
↑ = Improving position, ↓ = Worsening position



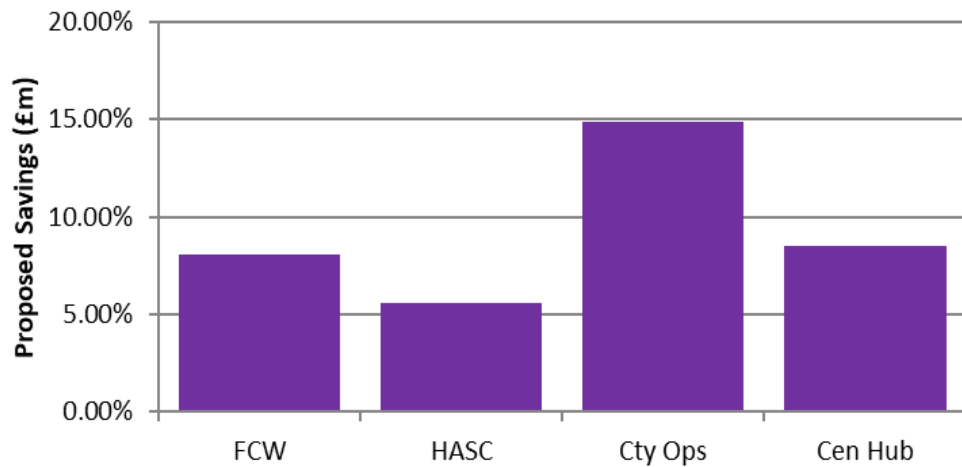
Forecast Percentage Variance



TBM Forecast Movement Month 9 to Month 12



Savings Target as a % of TBM Budget



Savings Monitoring

